

# KELLY DUPLEX

## Model 273 Plow Mixer

Serial No.: 69078-H11122; DM4411, 1998

Gross Vessel Capacity: 16 CF; **Nominal Working Capacity: 12 CF**

Construction: T304SS; 2-15/16" shaft and bearings

Sub-base; 6: Knife gate discharge; 15 HP drive at 180 RPM

Motor Control System; Stage Air System



Safe operations are profitable operations. Write or phone today for your free copy of our publication #369: **KELLY DUPLEX PROCESSING MACHINERY HAZARD WARNINGS.**

**KELLY DUPL**

# Model 273 Plow Mixer

Model 273 Mixer illustrated with hinged top cover open

3-H11122; DM4411, 1998  
; **Nominal Working Capacity: 12 CF**  
Construction: T304SS; 2-15/16" shaft and bearings  
Sub-base; 6: Knife gate discharge; 15 HP drive at 180 RPM  
Motor Control System; Stage Air System



**THE DUPLEX MILL & MANUFACTURING CO.**  
5555  
415 SIGLER ST., P.O. BOX 1266, SPRINGFIELD, OH 45501-1266 USA  
0859  
Email: [sales@dmmc.com](mailto:sales@dmmc.com) Home Page: <http://www.dmmc.com>  
2229

**TEL: 937/325-**  
**FAX: 937/325-**  
**FAX: 937/325-**

**IMPORTANT:** All illustrations and specifications are subject to change without notice and any drawing dimensions may not be to scale. Machines shown with protective covers, guards, grates, maintenance panels or interlocking limit switches removed are for illustrative purposes only. All protective devices must be in place before power is connected to machine and before operation. All sales are subject to our prevailing terms and General Conditions of Sale. See DMMC #1281-9.  
**SAFETY IS EVERYONE'S BUSINESS!** Safe operations are profitable operations. Write or phone today for your free copy of our publication #369: **KELLY DUPL** PROCESSING MACHINERY HAZARD WARNINGS.  
© The Duplex Mill & Mfg. Co., 1998

# KELLY DUPLEX

## Model 273 Plow Mixer

Serial No.: 69078-H11122; DM4411, 1998  
Gross Vessel Capacity: 16 CF; **Nominal Working Capacity: 12 CF**  
Construction: T304SS; 2-15/16" shaft and bearings  
Sub-base; 6: Knife gate discharge; 15 HP drive at 180 RPM  
Motor Control System; Stage Air System

**Model 273** Mixer drive end view on the left and opposite end view on the



**THE DUPLEX MILL & MANUFACTURING CO.**

5555

415 SIGLER ST., P.O. BOX 1266, SPRINGFIELD, OH 45501-1266 USA

0859

Email: [sales@dmmc.com](mailto:sales@dmmc.com)

Home Page: <http://www.dmmc.com>

2229

TEL: 937/325-

FAX: 937/325-

FAX: 937/325-

**IMPORTANT:** All illustrations and specifications are subject to change without notice and any drawing dimensions may not be to scale. Machines shown with protective covers, guards, grates, maintenance panels or interlocking limit switches removed are for illustrative purposes only. All protective devices must be in place before power is connected to machine and before operation. All sales are subject to our prevailing terms and General Conditions of Sale. See DMMC #1281-9.

**SAFETY IS EVERYONE'S BUSINESS!** Safe operations are profitable operations. Write or phone today for your free copy of our publication #369: **KELLY DUPLEX PROCESSING MACHINERY HAZARD WARNINGS.**

© The Duplex Mill & Mfg. Co., 1998

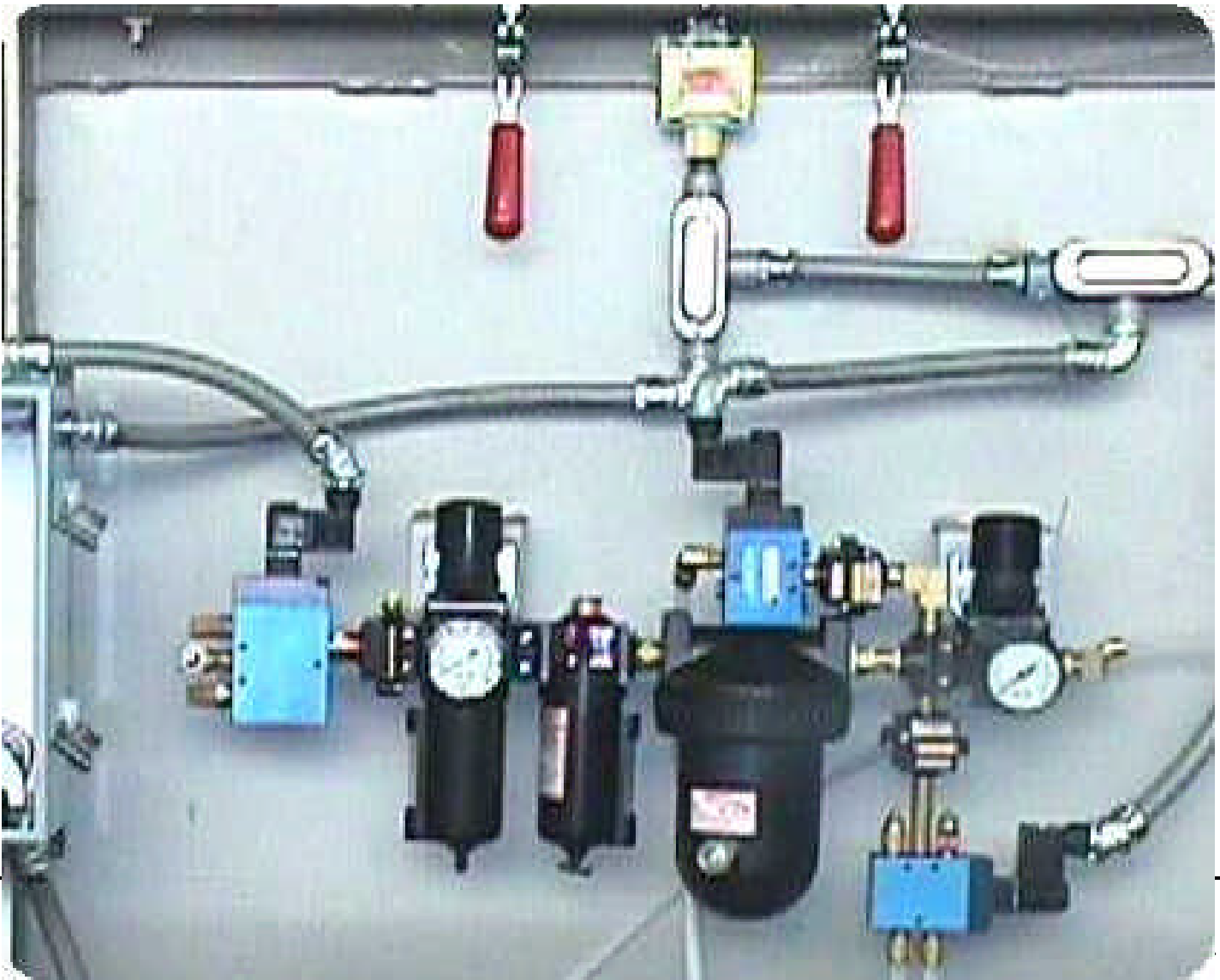
Page 3 of 4

# KELLY DUPLEX

## Model 273 Plow Mixer

Serial No.: 69078-H11122; DM4411, 1998  
Gross Vessel Capacity: 16 CF; **Nominal Working Capacity: 12 CF**  
Construction: T304SS; 2-15/16" shaft and bearings  
Sub-base; 6: Knife gate discharge; 15 HP drive at 180 RPM  
Motor Control System; Stage Air System

**Model 273 interior view** shows 140 grit polished surfaces and CEMA III welding.  
Replaceable plow and paddle tools are shown as well as air swept discharge pocket.



Email: [sales@dmmc.com](mailto:sales@dmmc.com)

Home Page: <http://www.dmmc.com>

FAX: 937/325-

2229

**IMPORTANT:** All illustrations and removed are for illustrative purposes on  
**SAFETY IS EVERYONE'S BUSINESS**  
© The Duplex Mill & Mfg. Co., 19

Mixer mounted, piped and wired **Stage Air System** provides properly conditioned air to the shaft seals, the discharge gate air cylinder and provides an air swept mixing chamber and discharge gate pocket.

els or interlocking limit switches  
Sale. See DMMC #1281-9.  
**DANGER WARNINGS.**  
Page 4 of 4