

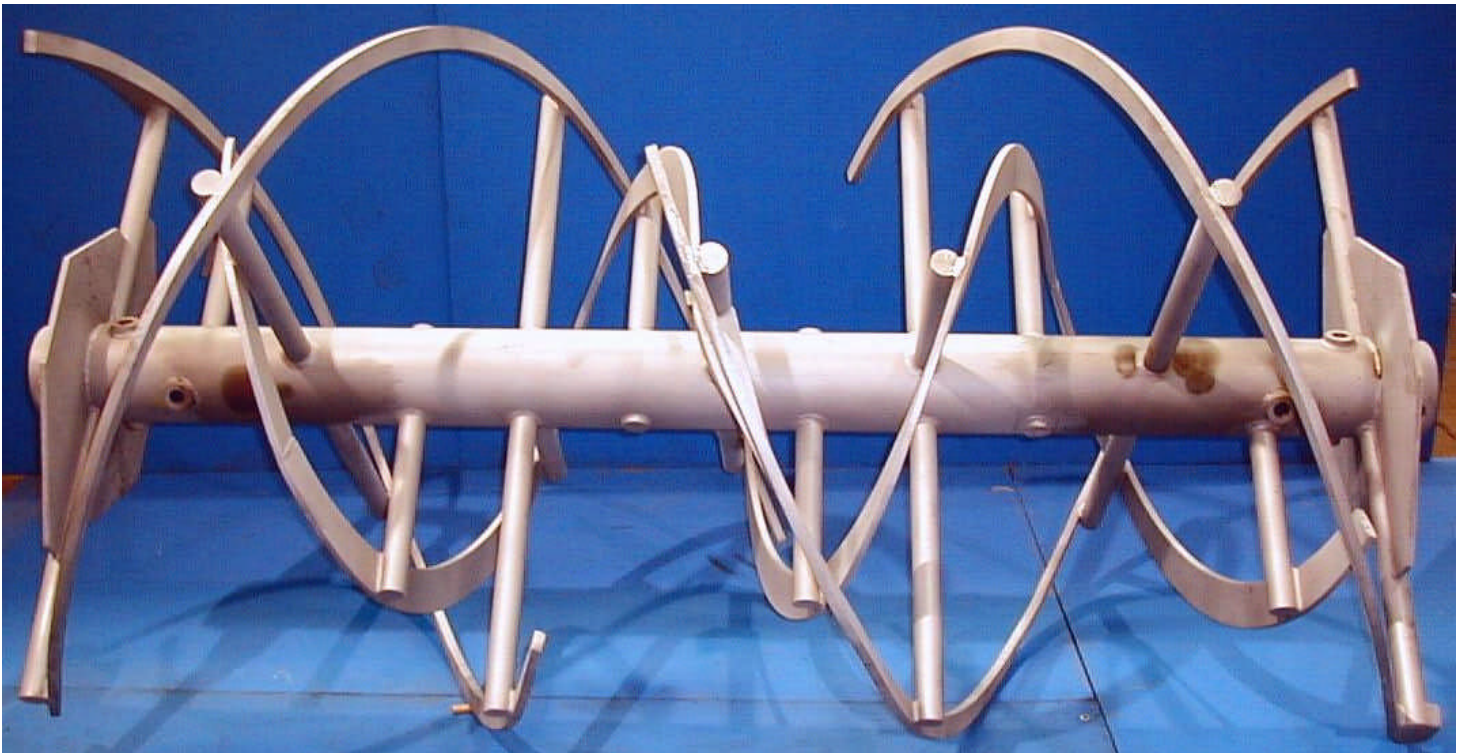
KELLY DUPLEX

Stainless Steel Mixing Ribbon Assembly

Double outer ribbon, Single inner ribbon

Model 4808SSR; 69191-H15388; May
1999

These views of a **Kelly Duplex Model 4808 mixing ribbon assembly** illustrate the heavy-duty stainless steel triple ribbon construction designed for rapid mixing of batched compounds. The assembly is 8 feet long and 4 feet in diameter with a center discharge pattern. It is constructed from 6-5/8" heavy wall tubing, 1-3/4" diameter arms and a 4" diameter T2205 high strength alloy stainless steel drive shaft. The double helix outer ribbon is fabricated from 5/8" thick T304 stainless steel plate. The single in stainless construction. The high strength stainless arms are installed to pass through the core tubing for added strength and life, and are massively reinforced at the ends. All welding is continuous and ground smooth, and all surfaces are finished and blasted. Nominal batching capacity of the Model 4808 Ribbon Mixer is 60 to 90 cubic feet of various compounds.

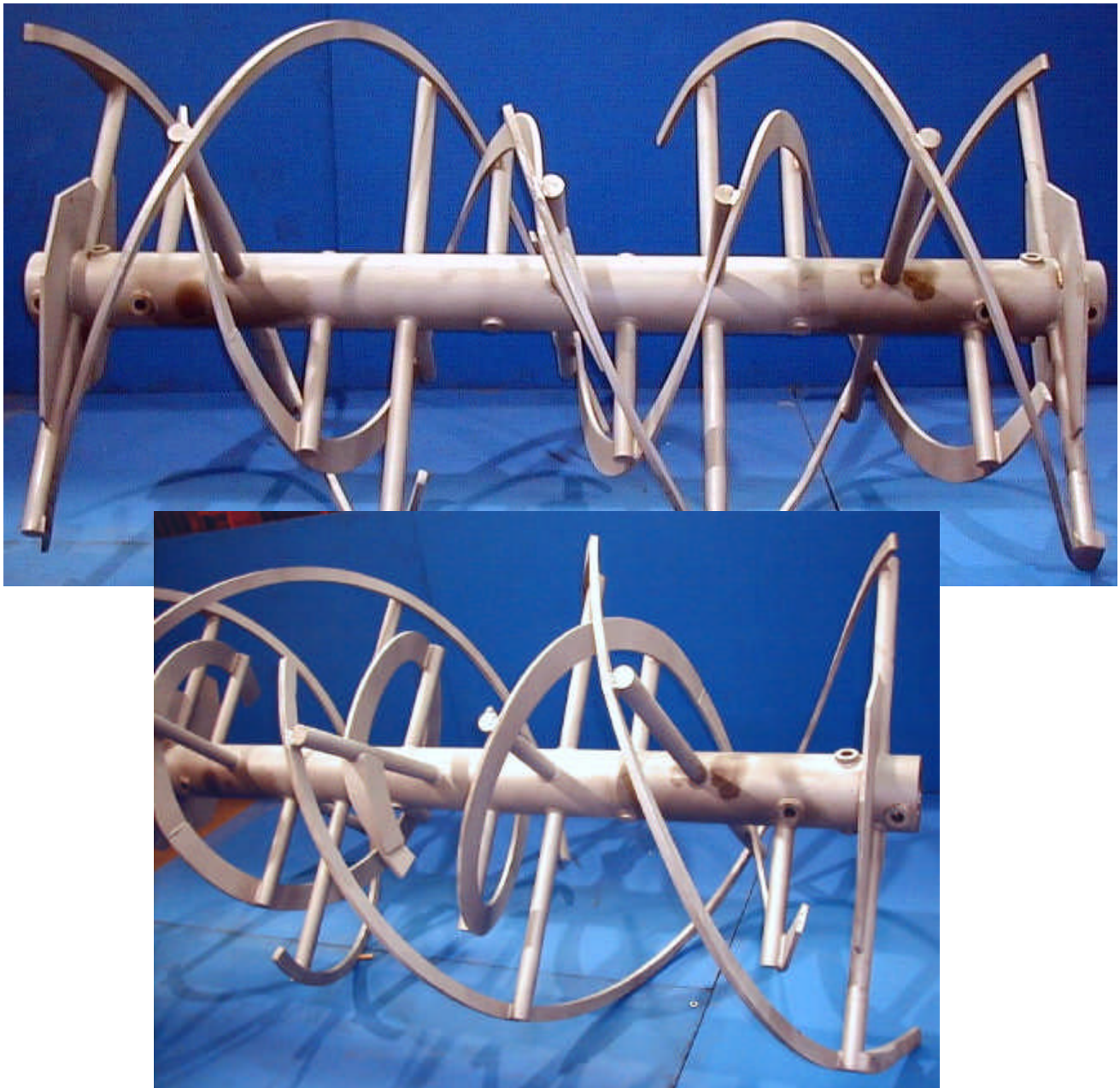


KELLY DUPLEX

Stainless Steel Mixing Ribbon Assembly

Double outer ribbon, Single inner ribbon

Model 4808SSR; 69191-H15388; May
1999



THE DUPLEX MILL & MANUFACTURING CO.

415 SIGLER ST., P.O. BOX 1266, SPRINGFIELD, OH 45501-1266 USA

Email: sales@dmmc.com

Home Page: <http://www.dmmc.com>

TEL: 937/325-5555

FAX: 937/325-0859

FAX: 937/325-2229

IMPORTANT: All illustrations and specifications are subject to change without notice and any drawing dimensions may not be to scale. Machines shown with protective covers, guards, grates, maintenance panels or interlocking limit switches removed are for illustrative purposes only. All protective devices must be in place before power is connected to machine and before operation. All sales are subject to our prevailing terms and General Conditions of Sale. See DMMC #1281-9.

SAFETY IS EVERYONE'S BUSINESS! Safe operations are profitable operations. Write or phone today for your free copy of our publication #369: **KELLY DUPLEX PROCESSING MACHINERY HAZARD WARNINGS.**

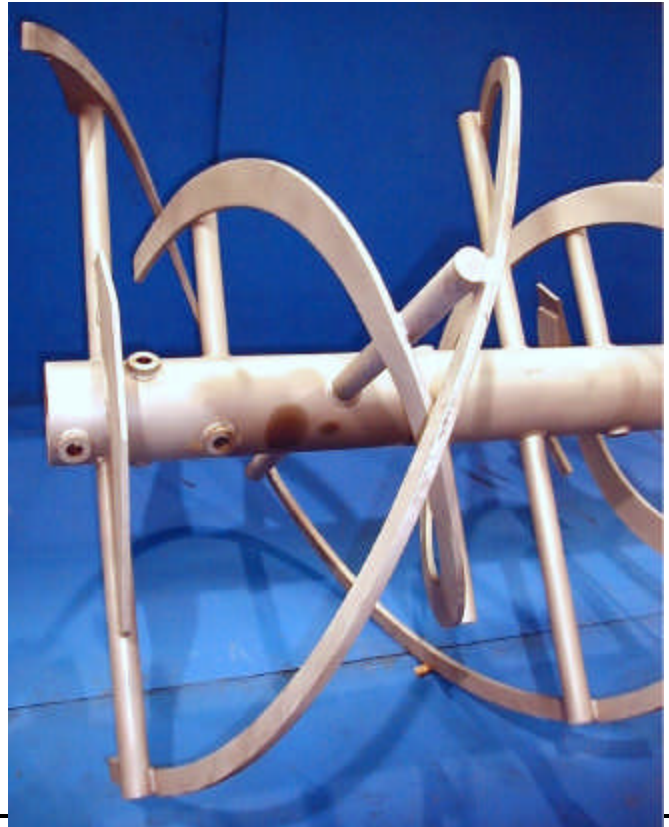
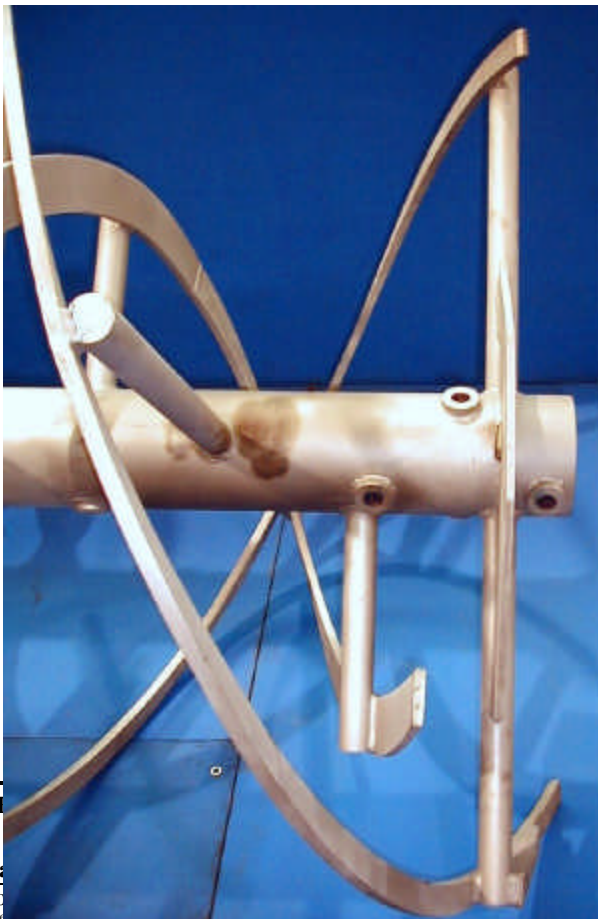
© The Duplex Mill & Mfg. Co., 1998

Page 2 of 6

Stainless Steel Mixing Ribbon Assembly

Full and oblique views illustrate construction detail of triple-ribbon heavy-duty design.

on, Single inner ribbon
; 69191-H15388; May
1999



THE
415
Em

IMP
remov
SAFETY IS EVERYONE'S BUSINESS! Safe operations are profitable operations. Write or phone today for your free copy of our publication #369: KELLY DUPLEX PROCESSING MACHINERY HAZARD WARNINGS.
© The Duplex Mill & Mfg. Co., 1998

-1266 USA
dmmc.com

TEL: 937/325-5555
FAX: 937/325-0859
FAX: 937/325-2229

dimensions may not be to scale. Machines shown with protective covers, guards, grates, maintenance panels or interlocking limit switches
d to machine and before operation. All sales are subject to our prevailing terms and General Conditions of Sale. See DMMC #1281-9.

KELLY DUPLEX

Stainless Steel Mixing Ribbon Assembly

Double outer ribbon, Single inner ribbon

Model 4808SSR; 69191-H15388; May 1999

Detail views illustrate ribbon reinforcing at critical load points and intricate ribbon mixing pattern.



The inner ribbon is designed to move material from the center of the batch to the outer ends of the mixing vessel. The double outer ribbon, in turn, moves material from the ends of the mixer to the center and provides for discharge and cleanout.

THE
415 S
Ema
IMPO
removed

SAFETY IS EVERYONE'S BUSINESS! Safe operations are profitable operations. Write or phone today for your free copy of our publication #369: KELLY DUPLEX PROCESSING MACHINERY HAZARD WARNINGS.

© The Duplex Mill & Mfg. Co., 1998

Page 4 of 6

55
59
29

le. Machines
tion. All sales are subject to our prevailing terms and General Conditions of Sale. See DMMC #1281-9.

KELLY DUPLEX

Stainless Steel Mixing Ribbon Assembly

Double outer ribbon, Single inner ribbon

Model 4808SSR; 69191-H15388; May 1999



Outer ribbon end detail illustrates reinforced close clearance of outer ribbon to mixing vessel endplate.

THE D
415 SIC
Email:

601-1266 USA
w.dmmc.com

25-5555
25-0859
25-2229

IMPORTANT: All illustrations and specifications are subject to change without notice and any drawing dimensions may not be to scale. All protective devices must be in place before power is connected to machine and before operation. SAFETY IS EVERYONE'S BUSINESS! Safe operations are profitable operations. Write or phone today for your free copy of our publication. © The Duplex Mill & Mfg. Co., 1998

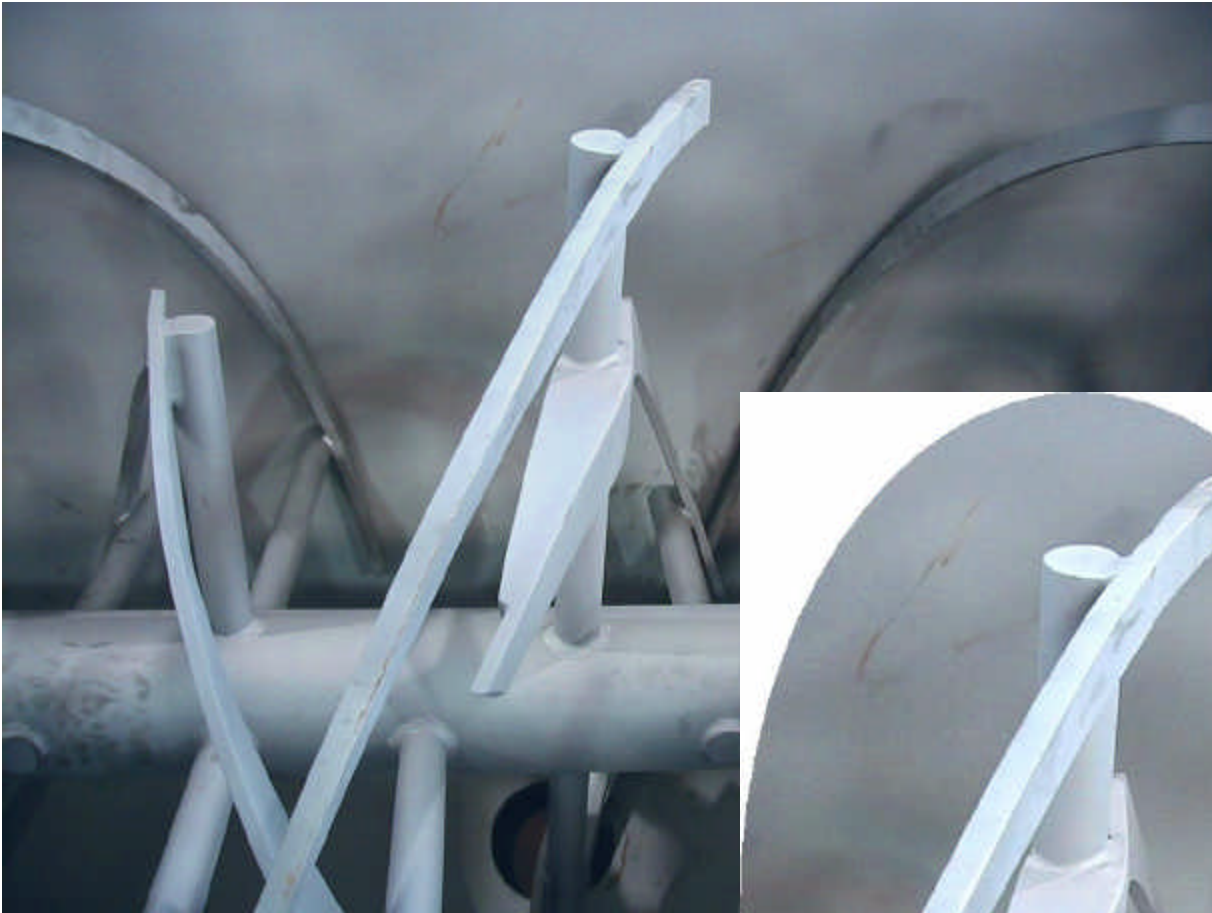
ing limit switches
#1281-9.
TINGS.
e 5 of 6

KELLY DUPLEX

Stainless Steel Mixing Ribbon Assembly

Double outer ribbon, Single inner ribbon

Model 4808SSR; 69191-H15388; May 1999



Inner ribbon detail shows the reinforced inner ribbon overlapping the center of the mixing vessel to pick up material and carry it to the outside ends.

THE
415 S
Email
IMPOR

US
con
may

removed for illustrative purposes only. All protective devices must be in place before power is connected to machine and
SAFETY IS EVERYONE'S BUSINESS! Safe operations are profitable operations. Write or phone today for your free copy
© The Duplex Mill & Mfg. Co., 1998

55
359
29

witches
9.