

# KELLY DUPLEX

T304SS Hand Breakdown Construction  
H15141 and H15142, May 1999

This 9 inch Tubular Screw Conveyor, 52" long endplate to endplate and constructed of T304SS is designed for hand breakdown and frequent cleaning. The tubular housing pivots on a fixed base so that the discharge end swings away from the work area for convenient maintenance. The internal conveyor parts are polished for easy cleanup. The spiral is slotted into the drive shaft and into the tail shaft so that re-assembly is accomplished by simply slipping the parts together after cleaning.



**THE DUPLEX MILL & MANUFACTURING CO.**  
415 SIGLER ST., P.O. BOX 1266, SPRINGFIELD, OH 45501-1266 USA  
Email: [sales@dmmc.com](mailto:sales@dmmc.com) Home Page: <http://www.dmmc.com>

TEL: 937/325-5555  
FAX: 937/325-0859  
FAX: 937/325-2229

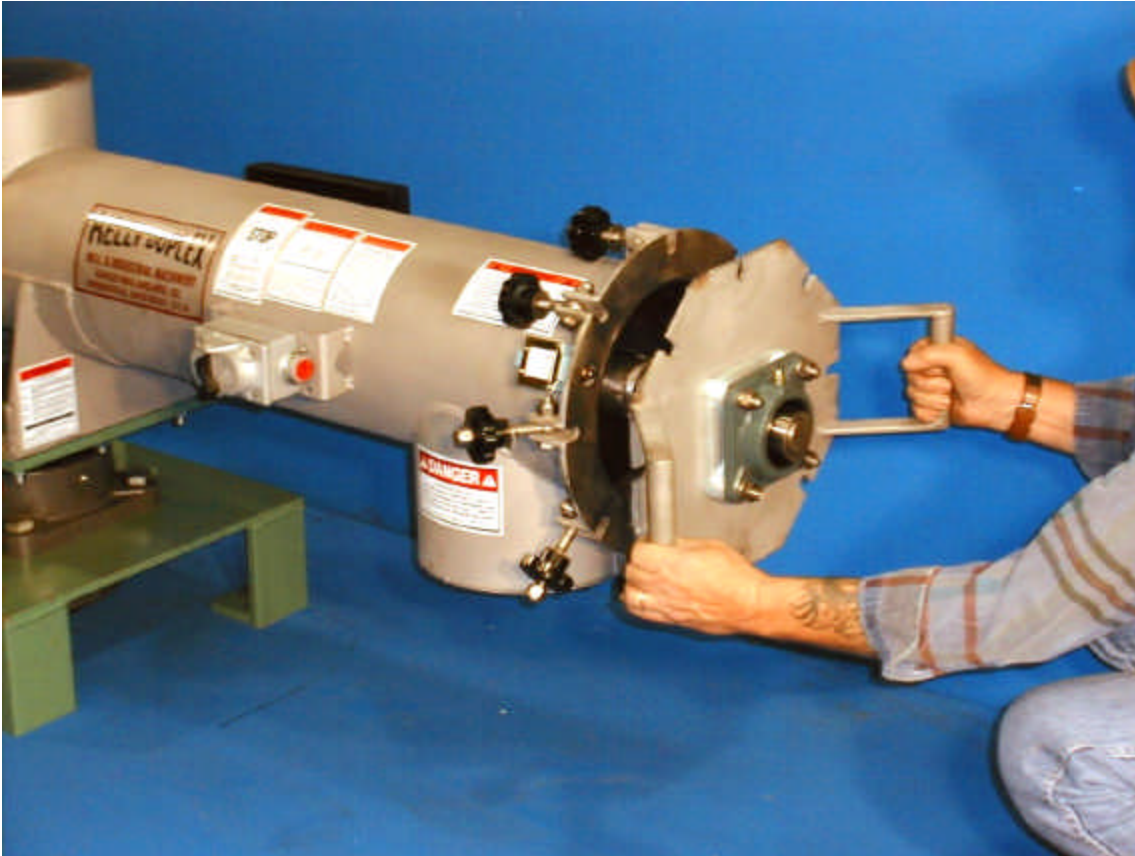
**IMPORTANT:** All illustrations and specifications are subject to change without notice and any drawing dimensions may not be to scale. Machines shown with protective covers, guards, grates, maintenance panels or interlocking limit switches removed are for illustrative purposes only. All protective devices must be in place before power is connected to machine and before operation. All sales are subject to our prevailing terms and General Conditions of Sale. See DMMC #1281-9.  
**SAFETY IS EVERYONE'S BUSINESS!** Safe operations are profitable operations. Write or phone today for your free copy of our publication #369: **KELLY DUPLEX PROCESSING MACHINERY HAZARD WARNINGS.**  
© The Duplex Mill & Mfg. Co., 1998

# KELLY DUPLEX

## 9" Tubular Screw Conveyor

T304SS Hand Breakdown Construction

H15141 and H15142, May 1999



Quick release pivoting clamps permit hand removal of endplate and easy access to screw spiral and inside of tubular housing for maintenance and cleaning. Note shaft pin that engages spiral bore slot, requiring no bolts or tools.



THE

5555

415 SIGLER ST., P.O. BOX 1266, SPRINGFIELD, OH 45501-1266 USA

FAX: 937/325-0859

Email: [sales@dmmc.com](mailto:sales@dmmc.com)

Home Page: <http://www.dmmc.com>

FAX: 937/325-2229

**IMPORTANT:** All illustrations and specifications are subject to change without notice and any drawing dimensions may not be to scale. Machines shown with protective covers, guards, grates, maintenance panels or interlocking limit switches removed are for illustrative purposes only. All protective devices must be in place before power is connected to machine and before operation. All sales are subject to our prevailing terms and General Conditions of Sale. See DMMC #1281-9.

**SAFETY IS EVERYONE'S BUSINESS!** Safe operations are profitable operations. Write or phone today for your free copy of our publication #369: **KELLY DUPLEX PROCESSING MACHINERY HAZARD WARNINGS.**

© The Duplex Mill & Mfg. Co., 1998

Page 2 of 4

# KELLY DUPLEX

## 9" Tubular Screw Conveyor

T304SS Hand Breakdown Construction

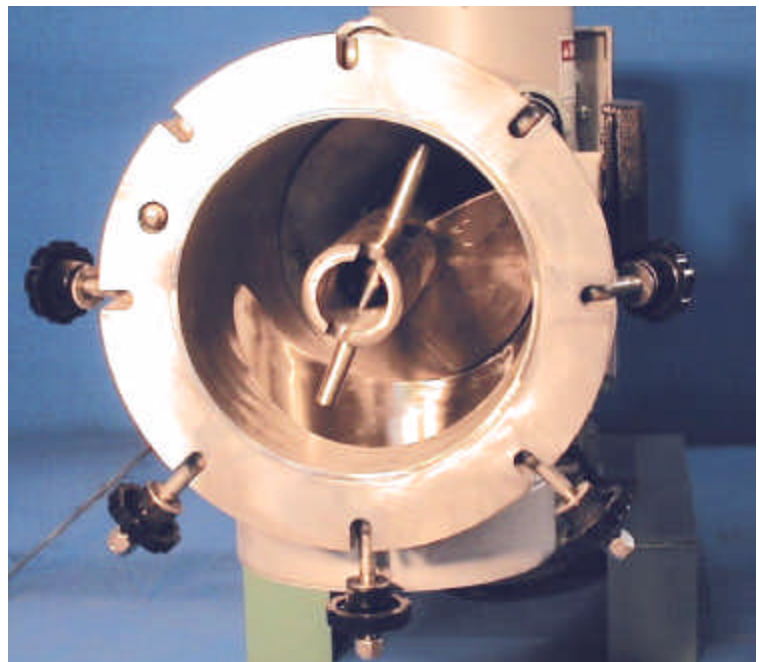
H15141 and H15142, May 1999



**The 3 HP drive** is illustrated above with flange a mounted gear reducer and an integral motor.

The photo at the right shows the discharge end of the screw conveyor with the endplate removed for maintenance.

**Removal of the spiral** for cleaning is accomplished by simply pulling it out of the tubular housing. Drive end thrust and radial thrust are both accepted by the drive shaft inserted and locked into the gear reducer



**THE DUPLEX MILL & MANUFACTURING CO.**

415 SIGLER ST., P.O. BOX 1266, SPRINGFIELD, OH 45501-1266 USA

Email: [sales@dmmc.com](mailto:sales@dmmc.com)

Home Page: <http://www.dmmc.com>

TEL: 937/325-5555

FAX: 937/325-0859

FAX: 937/325-2229

**IMPORTANT:** All illustrations and specifications are subject to change without notice and any drawing dimensions may not be to scale. Machines shown with protective covers, guards, grates, maintenance panels or interlocking limit switches removed are for illustrative purposes only. All protective devices must be in place before power is connected to machine and before operation. All sales are subject to our prevailing terms and General Conditions of Sale. See DMMC #1281-9.

**SAFETY IS EVERYONE'S BUSINESS!** Safe operations are profitable operations. Write or phone today for your free copy of our publication #369: **KELLY DUPLEX PROCESSING MACHINERY HAZARD WARNINGS.**

© The Duplex Mill & Mfg. Co., 1998

Page 3 of 4



# KELLY DUPLEX

## 9" Tubular Screw Conveyor

T304SS Hand Breakdown Construction

H15141 and H15142, May 1999



Views of the spiral above illustrate stepped pitch T304SS flighting continuously welded to T304SS pipe and polished. Drive and tail ends are slotted to provide slip together dis-assembly for frequent cleaning.

**THE DUPLEX MILL & MANUFACTURING CO.**  
415 SIGLER ST., P.O. BOX 1266, SPRINGFIELD, OH 45501-1266 USA  
Email: [sales@dmmc.com](mailto:sales@dmmc.com) Home Page: <http://www.dmmc.com>

TEL: 937/325-5555  
FAX: 937/325-0859  
FAX: 937/325-2229

**IMPORTANT:** All illustrations and specifications are subject to change without notice and any drawing dimensions may not be to scale. Machines shown with protective covers, guards, grates, maintenance panels or interlocking limit switches removed are for illustrative purposes only. All protective devices must be in place before power is connected to machine and before operation. All sales are subject to our prevailing terms and General Conditions of Sale. See DMMC #1281-9.  
**SAFETY IS EVERYONE'S BUSINESS!** Safe operations are profitable operations. Write or phone today for your free copy of our publication #369: **KELLY DUPLEX PROCESSING MACHINERY HAZARD WARNINGS.**  
© The Duplex Mill & Mfg. Co., 1998